



www.beringer.fr

Catalogue indice A 16-03-2009

**Quality
and performance
since 1985**

2009
**WHEELS
&
BRAKES**



CERTIFIED



made in
respect

www.madeinrespect.org

following TRA2007 (tire and rim association)

BERINGER SA - ZA - F-42940 Châtelneuf
Tel: (+33) 477 768 295 Fax: (+33) 477 768 009 e-mail: contact@beringer.fr



**Endurance World Champion
2000, 2002, 2003**

BERINGER® has been manufacturing brakes for motorcycles in the same spirit of quality and performance for 17 years. After only a short time, BERINGER® braking products have been accepted by the well-known racing teams for their exceptional reliability, allowing BERINGER® to be used by 15 teams in the World Endurance Championships over a period of 10 years. BERINGER® was used by the 2000 and 2003 World Champion Team Phase One, 2002 with the Team ZONG-SHEN, 2nd in 2005 and 3rd in 2006 with BOLLIGER Team.

Supermoto 2008 USA Champion



with praise in Supertourismo races with a title in 2002, 2003 and 2005 French Champion. BERINGER® also supplied the brakes for the 2003 RENAULT FRV6. This was all made possible by a team of exceptional Mechanical Engineers who have studied and developed new products for each specific use. These innovations are covered by many patents and have allowed BERINGER® brakes to take a decisive technological lead.

Of course BERINGER® controls product quality to ensure total reliability to the users of brakes. This is evidenced by the following certifications : ISO 9001, UTAC, TÜV.

BERINGER® wheels and brakes for airplanes are using this innovating technology as well as the patents developed for car and motorcycles competition. They have allowed the creation of a product whose ratio weight/performance is without precedent.

A new standard in safety and efficiency is now available in Aircraft Brake Systems.



WHEEL 5"

- Dimension : 5.00-5 and 4.00-5
- Static load 1432 Lbs Limit load : 5731 Lbs
- TUBELESS in three parts with O-rings and rigid valve.
- Aluminium alloy : 2017 machined from solid on CNC
- Following TRA 2007
- ISO standards bearings for optimized durability 25mm (1") for outer rim and 30mm (1.18") for inner rim (sealed ball bearings)

CALIPER AEROTEC® 2P for 5" wheel

- 2 austenitic stainless steel polished pistons
- Body made of aeronautic alloy which can withstand high temperatures (>200Mpa at 390°F)
- To be used with DOT 4, 2 input M10x1
- Covered with Aerotec® patents
- Maximum operating pressure: 870 psi, tested limit pressure: 1740 psi.
- Brake torque of 4230 in-lb (at maximum operating pressure)
- Use a floating stainless steel disc (patent 4D AEROTEC®)
- Sintered brake pads: allows very high friction temperature (> 1100°F) and very long life

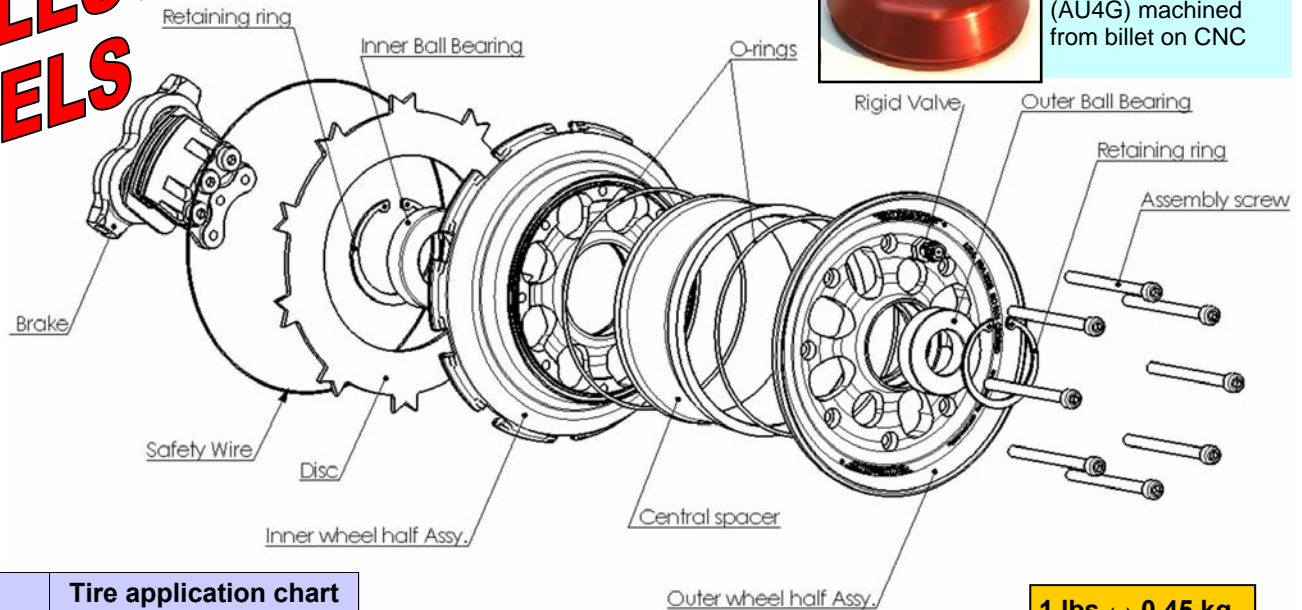


WHEEL CAP



- Anodized cap for wheel
- Alloy: 2017 (AU4G) machined from billet on CNC

**TUBELESS
WHEELS**



Wheel	Tire application chart
JA-01, JA-31, JB-01	5.00-5" 15x6.00-5"
JA-02, JA-32, JB 02	11x4.00-5"

1 lbs ↔ 0.45 kg
1 kg ↔ 2.2 lbs

	Part#	DESCRIPTION	weight	Static load	Brake torque	Max RTO Energy	Price without tax(each)
Wheel with brake	JA-01	5.00-5" Wheel with Aerotec® Caliper 2 pistons EA-01 and stainless steel Disc DSC-006.	4.25 lbs	1432 lbs	4230 in-lb	144,000 ft-lb	354 €
	JA-02	4.00-5" Wheel with Aerotec® Caliper 2 pistons EA-01 and stainless steel Disc DSC-006.	4.03 lbs	1432 lbs	4230 in-lb	144,000 ft-lb	354 €
	JA-31	5.00-5" Wheel with reinforced Aerotec® Caliper 2 pistons EA-03 and stainless steel Disc DSC-005	4.25 lbs	1432 lbs	4230 in-lb	198.000 ft-lb	398 €
	JA-32	4.00-5" Wheel with reinforced Aerotec® Caliper 2 pistons EA-03 and stainless steel Disc DSC-005	4.03 lbs	1432 lbs	4230 in-lb	198.000 ft-lb	398 €
Nose wheel	JB-01	5.00-5" Nose wheel	2.69 lbs	1432 lbs			248 €
	JB-02	4.00-5" Nose wheel	2.47 lbs	1432 lbs			248 €
Cap	ZJB01	Cap for 5" wheel	2 oz				39 €

WHEEL 6"

- Static load: 2094 Lbs Limit load: 8377 Lbs
- In three parts with rigid valve
- Alloy : 2017 (AU4G) machined from solid on CNC
- Following TRA 2007
- ISO standards bearings for optimised durability: 35mm (1.38") for outer rim and 45mm (1.77") for inner rim (sealed ball bearings)

CALIPER AEROTEC® 3P for 6" wheel

- 3 austenitic stainless steel polished pistons
- Body made of aeronautic alloy which can withstand high temperatures
- (>200Mpa at 390°F)
- Machined from solid on CNC
- To be used with DOT 4, 2 input M10x1
- Covered with Aerotec® patents
- Maximum operating pressure: 870 PSI tested limit pressure: 1740 PSI.
- Brake torque of 7720 in-lb (at maximum operating pressure)
- Normal Kinetic Energy: 340,000 in-lb
- Maximum R.T.O Kinetic Energy: 405,000 ft-lb
- Fixed caliper with a floating disc (patent 4D AEROTEC®)
- Sintered brake pads: allows very high friction temperature



3 piston AEROTEC® Caliper with sintered metal pads

	Part#	DESCRIPTION	weight	Static load	Brake torque	Max RTO Energy	Price without tax (each)
Wheel with brake	JAB01	6.00-6" wheel (CNC machined - tubeless mounting) with Aerotec® Caliper 3 pistons EA-02 and stainless steel Disc DSC-001	8.38 lbs	2094 lbs	7720 in-lb	405,000 ft-lb	548€
Cap	ZJB03	Cap for wheel 6", aluminium CNC machined, anodized	2 oz				45 €

TUBELESS WHEELS

Wheel	Tire application chart	
JAB01	6.00-6"	15x6.00-6"
	7.00-6"	8.00-6" 8.50-6"

CAP FOR WHEEL

- Anodized cap for wheel
- Alloy: 2017 (AU4G) machined from billet on CNC



FINISH: Red anodizing is standard color for wheels, brakes and master cylinders. Other colors are available on special order at an additional cost of **\$96 USD** per batch of parts: **silver, blue, black, yellow, titanium grey**. Polishing is also available for the wheels with a lead time and an extra cost of **\$142 USD**.

WE RECOMMEND FIRST MOUNTING OF TIRES ON WHEELS IN OUR PLANT. This service, free of charge, includes a pressure test, ensuring maximum security of the assembly.

Wheel 6" light for ULM/LSA

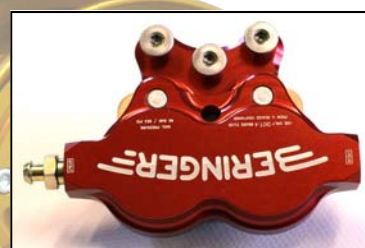
WHEEL 6" light

- Static load: 881 Lbs Limit load: 3526 Lbs
- In three parts with rigid valve
- Alloy : 2017 (AU4G) machined from billet on CNC
- Following TRA 2007
- ISO standards bearings for optimized durability: 25mm (1") for outer rim and 30mm (1.18") for inner rim (sealed ball bearings)

CALIPER AEROTEC® 2P for wheel 6" light

- 2 austenitic stainless steel polished pistons
- Body made of aeronautic alloy which can withstand high temperatures (>200Mpa at 390°F)
- To be used with DOT 4, 2 input M10x1
- Covered with Aerotec® patents
- Maximum operating pressure: 870 psi
- Tested limit pressure: 1740 psi.
- Brake torque of 4230 in-lb (at maximum operating pressure)
- Normal Kinetic Energy: 120,000 ft-lb Maximum R.T.O Kinetic Energy: 144,000 ft-lb
- Caliper is fixed with a floating disc (patent 4D AEROTEC®)
- Sintered brake pads: allows very high friction temperature (> 1100°F) and very long life

PATENTED



2 piston AEROTEC® Caliper with sintered metal pads

TUBELESS WHEELS

	Part #	DESCRIPTION	weight	Static load	Brake torque	Max RTO Energy	Price without tax (each)
Wheel with brake	JAA01	6.00-6 light Wheel with Aerotec® Caliper 2 pistons EA-01 and stainless steel Disc ZJA02	4.63 lbs	881lbs	4230 in-lb	144,000 ft-lb	378 €
	JAA02	4.00-5 light Wheel with Aerotec® Caliper 2 pistons EA-01 and stainless steel Disc ZJA02	4.25 lbs	881lbs	4230 in-lb	144,000 ft-lb	378 €
Nose wheel	JBA01	6.00-6 light Nose wheel (CNC machined - tubeless mounting)	3.10 lbs	881lbs			282 €
	JBA02	4.00-6 light Nose wheel (CNC machined - tubeless mounting)	2.73 lbs	881lbs			282 €
Cap	ZJB02	Cap for 6" light Wheel aluminium CNC machined, anodized	2 oz				39 €

Wheel	Tire	Application Chart
JAA01	600-6"	7.00-6" 800-6"
JBA01	15x600-6"	
JAA02	4.00-6"	15x6.00-6"
JBA02	13x5.00-6"	

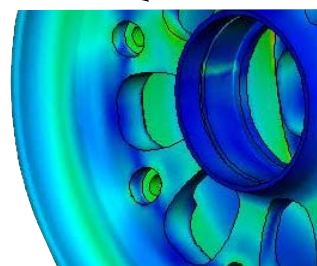
CAUTION: static load valid only with appropriate tire

1 lbs ↔ 0.45 kg
1 kg ↔ 2.2 lbs

FEM calculated and checked

CAP FOR WHEEL

- Anodized cap for wheel
- Alloy: 2017 (AU4G) machined from billet on CNC

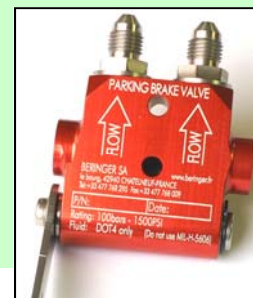


FINISH: Red anodizing is standard color for wheels, brakes and master cylinders. Other colors are available on special order at an additional cost of **\$96 USD** per batch of parts: **silver, blue, black, yellow, titanium grey**. Polishing is also available for the wheels with a lead time and an extra cost of **\$142 USD**.

WE RECOMMEND FIRST MOUNTING OF TIRES ON WHEELS IN OUR PLANT. This service, free of charge, includes a pressure test, ensuring maximum security of the assembly.

Lightweight parking brake valve, aluminum anodized, fully CNC machined.
Available for mineral-based fluid or DOT4 brake fluid.

- Lightweight parking brake valve, Aluminium anodized.
- Available for mineral-based fluid like MIL-5606 or synthetic DOT4 brake fluid.
- Machined from billet on CNC.
- Max. input pressure: 1450 PSI



Part #	DESCRIPTION		weight	Price without tax
HVA01	BERINGER Parking brake valve for DOT4 brake fluid (red anodizing color) DOT4		5 oz	186 €
HVA02	BERINGER Parking brake valve for mineral-based fluid (blue anodizing color) MIL-H-5606		5 oz	186 €

Brake Master Cylinder

MASTER CYLINDER AEROTEC® for hand brake *part # HAA01*

- Utilizes a three ball bearing system
- Covered with the world-wide AEROTEC® patents, it brings exceptional brake feeling
- Machined from billet on CNC
- Weight: 10 oz
- To fix on 22 mm (0.86") axle or directly on flat surface with 2 screws
- Works in all position



RESERVOIR kit for master cylinder *part # HFA01*

- Translucent reservoir with aluminium cover machined on CNC
- Visible brake fluid level
- Weight: 1 oz
- With bellows for sealing
- Needs to be used with HAA01 or HBA01

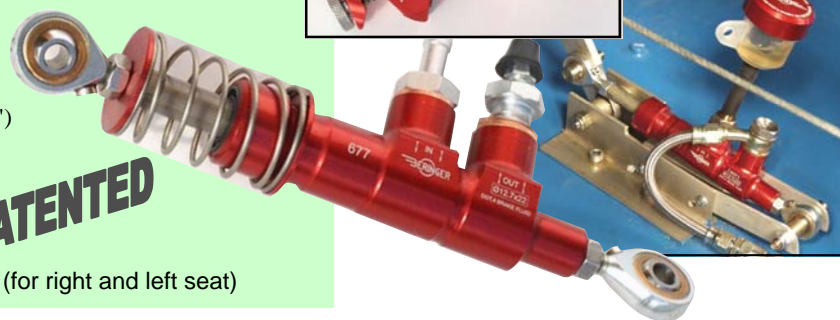


MASTER CYLINDER for Rudder pedals

part # HBA01

- Weight without ball ends : 3 oz
- Diameter of the piston: 12.7 mm (0.5 ")
- Piston maximum travel : 20 to 22mm (0.75 to 0.86")
- Generated volume : 1.5 cubic inch
- Thread type of the connections: M10x1
- Ball end rods: M6x1 (male).
- Machined from solid on CNC
- Allows the mounting of 2 master cylinders in series (for right and left seat)

PATENTED

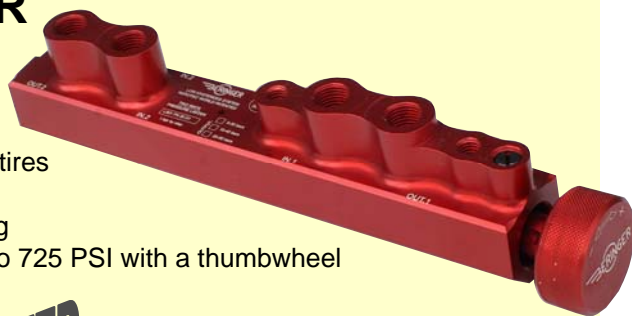


Part #	DESCRIPTION		weight	Price without tax
HAA01	Master cylinder for hand brake	fluid DOT4	285g	198 €
HAA02	Master cylinder for hand brake with parking brake pin	fluid DOT4	285g	214 €
HAB01	Master cylinder for hand brake with integrated resevoir	fluid DOT4	310g	226 €
HAB02	Master cylinder for hand brake with integrated resevoir and parking brake pin	fluid DOT4	310g	242 €
HFA01	Reservoir kit	fluid DOT4	18g	31 €
HBA01	Master cylinder for rudder pedal	fluid DOT4	75g	164 €

BALANCED ANTI-LOCK REGULATOR

part # HCA02 and HCA12

- Low hysteresis anti-lock regulator
- For aircraft with differential braking system (left and right)
- This system avoids problems of brake locking and increases life of tires and brake systems (linings, disc, inner rim)
- Allows braking perfectly straightaway, in case of emergency braking
- Can be adjusted at every 15 PSI from 145 to 580 PSI or from 290 to 725 PSI with a thumbwheel
- 2 feeding and 2 output (thread : M10x1)
- For DOT4 brake fluid
- Machined from solid on CNC
- Weight: 270g (10 oz)



PATENTED

Ultralight PRESSURE LIMITER

part #HZA01, HZA02, HZA03, HZA04

- Can progressively limit the pressure in the braking system at 360, 500, 650 or 870 Psi
- Highly recommended to avoid over pressure and damage on the brake system
- Thread type of connection: M10x1
- Machined from solid on CNC
- For DOT4 brake fluid
- Weight: 3 oz



PATENTED

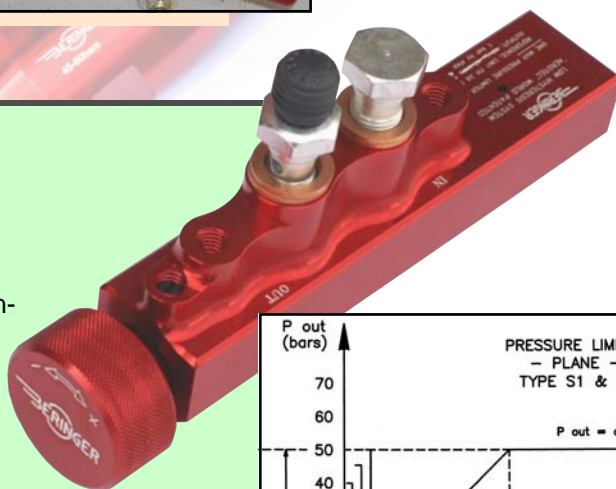


Smaller than a marker

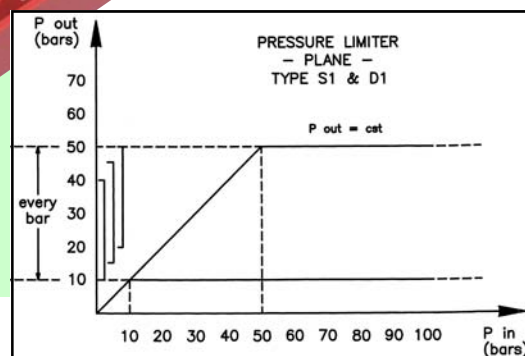
ANTI-LOCK REGULATOR

part # HCA01 and HCA11

- Low hysteresis anti-lock regulator
- For aircraft with symmetrical braking system
- This system avoids problems of brake blocking and increases life of tires and brake systems (linings, disc, inner rim)
- Can be adjusted from 145 to 580 psi or from 290 to 725 psi with a thumbwheel
- thread type of connection: M10x1
- For DOT4 brake fluid
- Machined from solid on CNC
- Weight: 8 oz



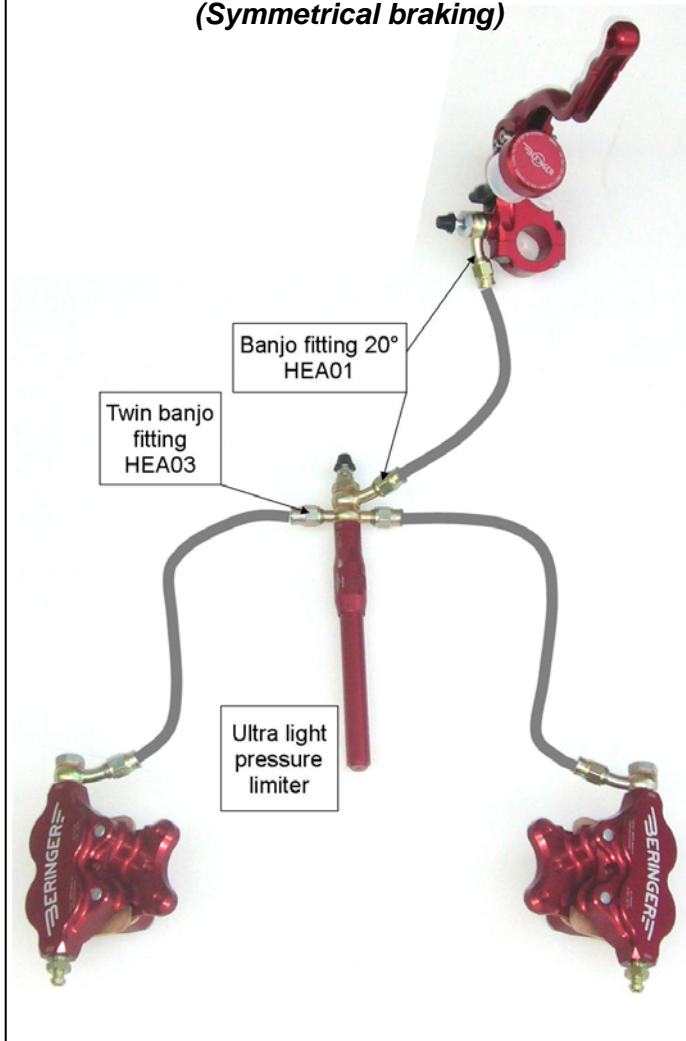
PATENTED



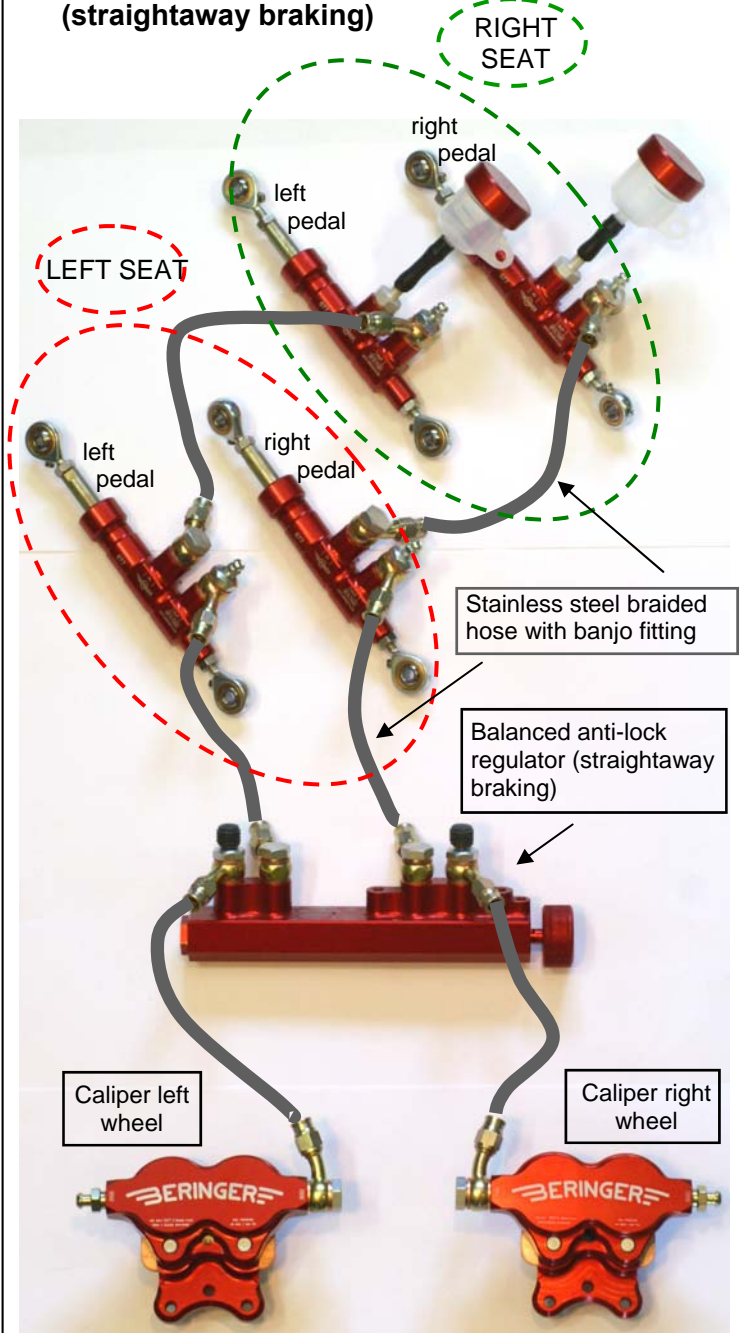
1 bar ↔ 14.5 psi
1 psi ↔ 0.069 bar

Part #	DESCRIPTION		weight	Price without tax
HCA01	Anti-lock regulator 10 to 40 bars	brake fluid DOT4	270g	124 €
HCA11	Anti-lock regulator 20 to 50 bars	brake fluid DOT4	270g	124 €
HCA02	Balanced anti-lock regulator 10 to 40 bars	brake fluid DOT4	330g	124 €
HCA12	Balanced anti-lock regulator 20 to 50 bars	brake fluid DOT4	330g	124 €
HZA04	Ultralight pressure limiter 25 bars	brake fluid DOT4	65g	79 €
HZA01	Ultralight pressure limiter 35 bars	brake fluid DOT4	65g	79 €
HZA02	Ultralight pressure limiter 45 bars	brake fluid DOT4	65g	79 €
HZA03	Ultralight pressure limiter 60 bars	brake fluid DOT4	65g	79 €

BRAKE SCHEMA with ultra light regulator (Symmetrical braking)



Differential braking system with balanced anti-lock regulator (straightaway braking)



In the above mounting master cylinders
P/N: HBA01 are mounted in series

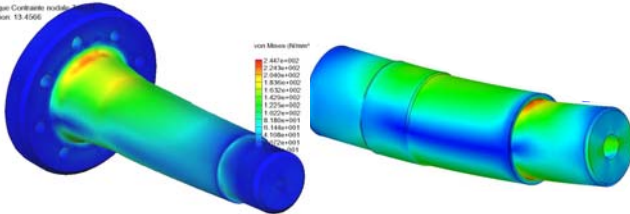
**CAUTION: BERINGER® and AEROTEC® are registered trademarks.
BERINGER® owns 9 different world patents protecting its unique technology on master cylinders, calipers, discs, brake regulators and aircraft wheels.**

INFRINGERS WILL BE PROSECUTED

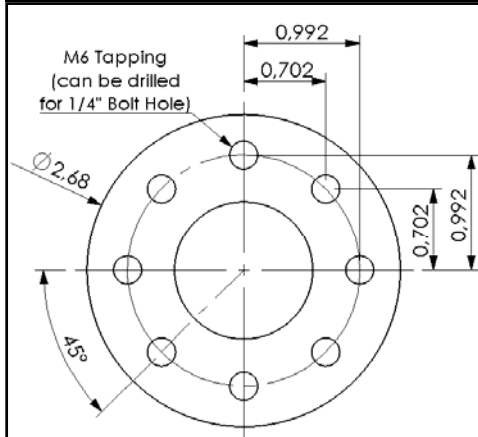
WHEEL AXLES

- Material: aluminium anodized or high strength steel with thin nickel coating
- Different types of axle available:
 - for wheel fork
 - for cantilever installation
- FEM calculated and checked for better stress distribution

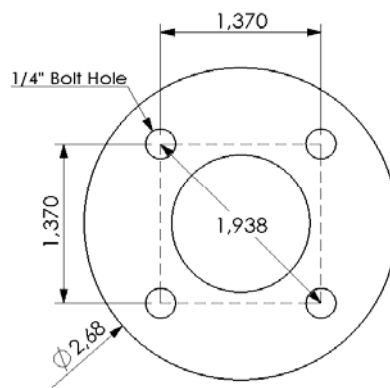
Name du mod le: Axon.dwg
 Name de l'objet: 1
 Type de l'objet: Diagramme Contrainte  l mentaire
 Echelle de d formation: 13.4566



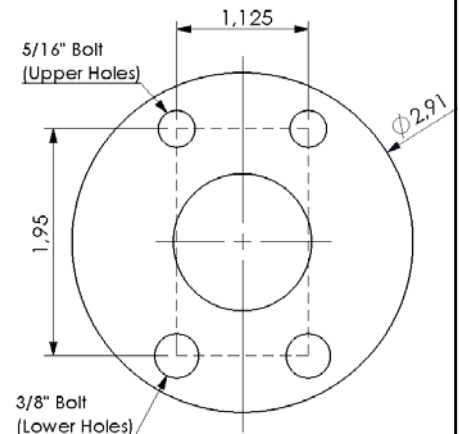
AXLE BOLT HOLE TEMPLATES (dimensions are inches)



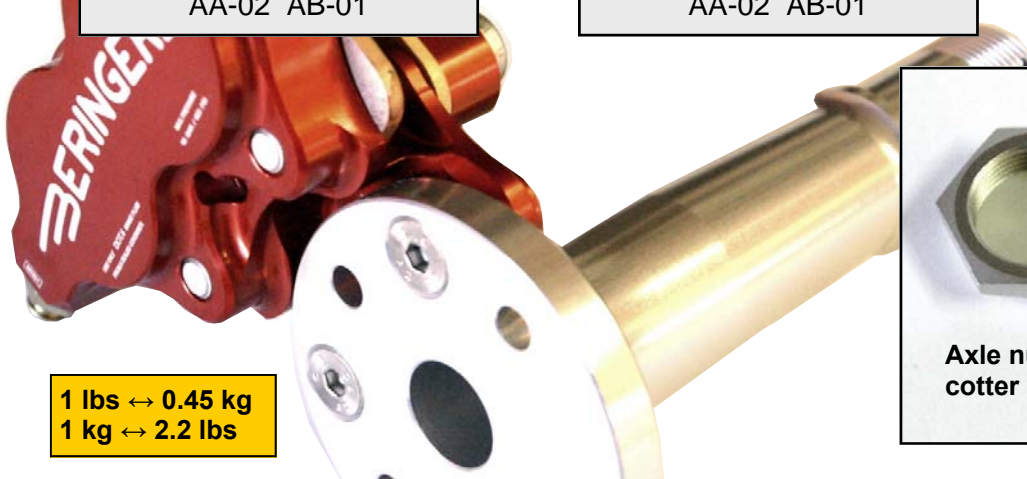
TYPE 1 hole pattern
 Matches axle part# AA-01
 AA-02 AB-01



TYPE 2 hole pattern
 Matches axle part# AA-01
 AA-02 AB-01



TYPE 3 hole pattern
 Matches axle part# AA-04



1 lbs ↔ 0.45 kg
 1 kg ↔ 2.2 lbs



Axle nut and
 cotter pin

Part #	DESCRIPTION	weight	Max Static load per axle	Limit load	Price without tax
AA-01	Aluminium Axle for 5.00-5" and 4.00-6" light wheel	9 oz	750 Lbs	2600 Lbs	64 €
AA-02	Aluminium Axle for 4.00-5" wheel (anodized)	8 oz	950 Lbs	3400 Lbs	64 €
AA-04	Aluminium Axle for 6.00-6" wheel (anodized)	1.4 lbs	1800 Lbs	6300 Lbs	98 €
AB-01	Steel Axle for 5.00-5" wheel (nickel coated)	1.37lbs	1400 Lbs	4900 Lbs	86 €
ZSA01	Aluminium nut M25x1,5	0.3 oz	For axle AA-01, AA-02, AB-01		5.9 €
ZSB01	Aluminium nut M35x1,5	0.5 oz	For axle AA-04		8.5 €



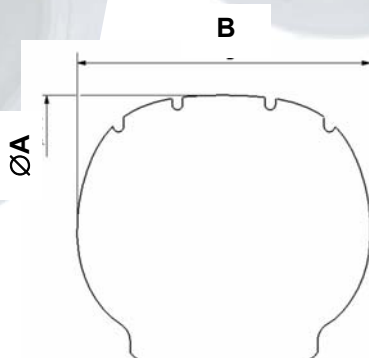
BERINGER TIRE CHANGING TOOL

- Specific tire change tool for BERINGER wheels with conical aluminum spacer to insert tire on wheel half.
- Plywood flanges maintain tire while positioning second wheel half with the O-ring.
- Includes: Plywood flanges, bolts with butterfly nut and conical aluminum spacer

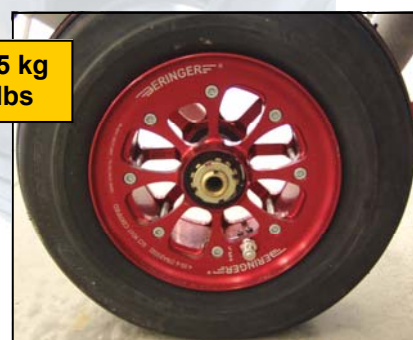
Part#	DESCRIPTION	Price without tax
OPA01	Tire change tool for 5" wheels	78 €
OPA02	Tire change tool for 6" wheels	92 €

TIRES

Part#	DESCRIPTION		ØA (inch)	B (inch)	weight	Price without tax
PAA02	Michelin Aviator 5.00-5", 10 ply TUBELESS	Static load 2150 lbs	14.2	4.65	5.9 lbs	132 €
PAB01	Michelin Air 380x150-5", 6 ply,	Static load 1598 lbs	14.96	5.5	6.7 lbs	122 €
PAB02	Michelin Aviator 15x6.00-6", 6 ply,	Static load 1950 lbs	14.96	6.3	7 lbs	112 €
PAB03	Michelin Aviator 6.00-6", 8 ply TUBELESS	Static load 2350 lbs	17.5	6.3	8.9 lbs	149 €
PAB03	Michelin Aviator 8.00-6", 6 ply	Static load 2050 lbs	18.9	7.8	12.9Lbs	132 €
PAC01	Tire 11x4.00-5", 8 ply	(non certified)	11.6	3.78	2.9 lbs	32 €
PAC02	Deli Tire 15x6.00-6", 6 ply	(non certified)	14.75	5.1	4.7 lbs	32 €
PAC03	Deli Tire 13x5.00-6", 4 ply	(non certified)	13.4	4.65	3.1 lbs	32 €
PAE01	Carlisle 8.00-6", 4ply	(non certified)	17.7	7.1	6.6 lbs	85 €



1 lbs ↔ 0.45 kg
1 kg ↔ 2.2 lbs



A fitting is required at each end of stainless steel hose.

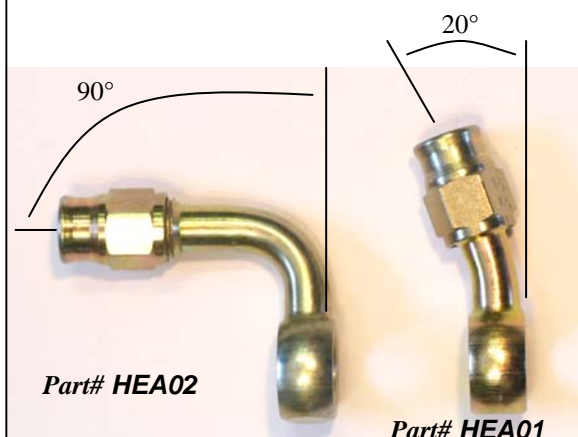


Part# HEA04

Part# HDB01



Stainless steel hose
braided for brake lines



Part# HEA02

Part# HEA01



Part# HEA08 and HEA09



Part# HEA05

**CHOOSE your fittings, length and ORDER
YOUR BRAKE LINE
READY TO USE**

See special brake line ORDER FORM
at the end of the catalogue

Part #	DESCRIPTION	Price without tax
HDA01	EPDM hose for reservoir, specific for DOT4 brake fluid	Per meter 4€
HJA01	High performance Brake fluid DOT4	(0.5 L) 18.40 €
HJA02	High performance Brake fluid DOT5 Silicone base (longer life time). DOT5 cannot be mixed with DOT4.	(0.35 L) 22.50 €
HDB01	Stainless steel hose, braided, PTFE high temperature inner tube	Per meter 9.5 €
HEA01	Banjo fitting 20°	8.4 €
HEA02	Banjo fitting 90°	16.8 €
HEA03	Banjo twin	32 €
HEA04	Straight fitting, male M10x1	12.3 €
HEA05	Brake adaptor Metric M10x1 to JIC 7/16x20	8.9 €
HEA08	Straight fitting, female concave seat 7/16x20 (stainless)	35 €
HEA09	Straight fitting, female concave seat 3/8x24 (stainless)	29 €
ZGA01	Cushioned tube clamps for stainless steel hose	(batch of 10 parts) 7 €

BRAKE LINES for RV's

Retrofit your RV with stainless brake lines :

- BERINGER® Brake hose is stainless steel braided with PTFE inner tube and stainless steel fittings. It provides consistent brake pedal pressure without spongy feeling. The flexibility allows landing gear leg movements and avoids leakage that appears with hardline tube. Each brake line connect brake caliper to fuselage connector: straight fittings, female concave seat 7/16x20.
- Each brake line is pressure tested and delivered with certificate.



Part #	DESCRIPTION	price
HED01	Set of 2 Brake lines for RV6, 7, 9	138 €
HED02	Set of 2 Brake lines for RV6A, 7A, 9A	138 €

Save 2 to 3 Lbs on your experimental aircraft with lightweight BERINGER nose wheel. Nose Wheels are aluminum red anodized, machined from billet on CNC, with O-rings for Tubeless mounting.

- Static capacity: 1440 Lbs (with appropriate tire).
- Aluminium axle for 5/16 bolt diameter.

The 5" NOSE WHEEL KIT includes:

- 1 nose wheel
- 1 tire (mounted on rim, pressure tested)
- 1 aluminium axle with bearing spacer

TUBELESS WHEEL



Aircraft Type	DESCRIPTION	weight	BERINGER® Part Nr.	Price without tax
Lancair 320, 360 (retractable LG)	Nose wheel kit as described above, with Tire 11x4.00-5", 8ply	5.9 Lbs	SLC02A	349 €
Lancair legacy (retractable LG)	Nose wheel kit as described above, with Tire 11x4.00-5", 8ply	5.9 Lbs	SLC01A	349 €
Glasair III (retractable LG)	Nose wheel kit as described above, with Tire 11x4.00-5", 8ply	5.9 Lbs	SGL01A	349 €
Van's RV6A, 7A, 9A	Nose wheel kit as described above, with Tire 11x4.00-5" 8ply	5.9 lbs	SRV02A	349 €
MCR 01	Nose wheel kit as described above, with Tire 11x4.00-5" 8ply	2570 g	SDY01A	319 €
Zenair CH601XL	Nose wheel kit as described above, with Michelin Aviator 5.00-5" 10ply Tubeless	9 lbs	SZH01A	368 €
Standard BERINGER	Nose wheel kit 4,00-5" + tire 11x4,00-5" 8 ply + aluminium bracket for axle Ø20mm	2570 g	SST02	298 €
Standard BERINGER	Nose wheel kit 5,00-5" + tire Michelin Aviator 5,00-5" 10ply Tubeless + aluminium bracket for axle Ø20mm	3950 g	SST03	398 €
Standard BERINGER	Nose wheel kit 4,00-6" + tire 13x5,00-6" 4 ply + aluminium bracket for axle Ø20mm	2800 g	SST04	354 €



Wheel & brake SET for Van's RV6/6A - 7/7A - 8/8A - 9/9A p.13

Upgrade your experimental aircraft and save 6 to 10 Lbs with high performances BERINGER® wheels and brakes. These complete wheels and brake sets are designed to mount directly, replacing original equipment. Wheels are aluminum red anodized, fully CNC machined, with O-rings for Tubeless mounting. Brake calipers use sintered metallic pads and stainless steel pistons for increased life time.

Wheel & brake set includes:

- 2 wheels 5" with reinforced calipers and stainless steel discs
- 2 tires (mounted on rims and pressure tested)
- 2 axles or 2 sets of adaptation parts
- 4 master cylinders & 2 fluid reservoirs
- 1 parking brake valve
- 1 anti-lock regulator
- stainless steel brake lines
- detailed mounting procedure.

PATENTED

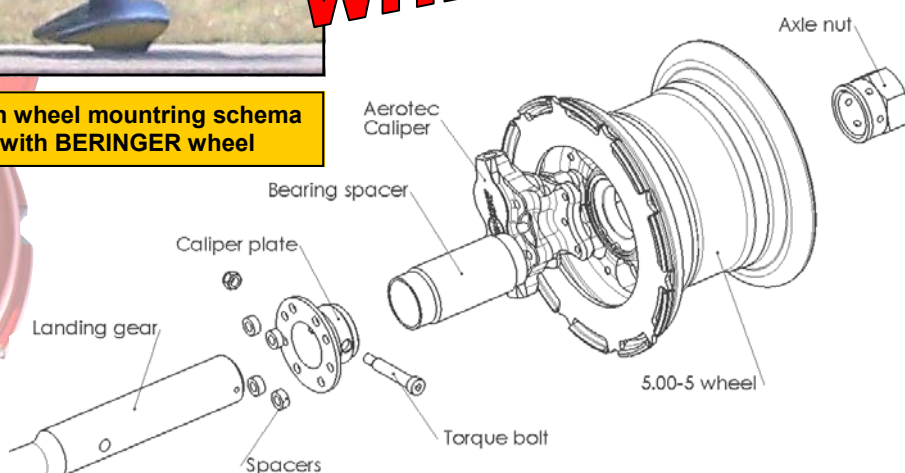


Aircraft Type	DESCRIPTION	Brake fluid	BERINGER® Part#	Price without tax
Van's RV6, 7, 9	Complete package as described above, with Michelin Aviator Tires 5,00-5", 10ply Tubeless and 4 master cylinders	DOT4	SRV01	2423 €
Van's RV6, 7, 9	Same as SRV01 with only 2 Master cylinders and no parking brake valve	DOT4	SRV06	2013 €
Van's RV6A, 7A, 9A	Complete package as described above, with Michelin Aviator Tires 5,00-5", 10ply Tubeless and 4 master cylinders	DOT4	SRV02	2423 €
Van's RV6A, 7A, 9A	Same as SRV02 with only 2 Master cylinders and no parking brake valve	DOT4	SRV05	2013 €
Van's RV8	Complete package as described above, with Michelin Aviator Tires 5,00-5", 10ply Tubeless and 2 master cylinders	DOT4	SRV03	2033 €
Van's RV8A	Complete package as described above, with Michelin Aviator tires 5,00-5", 10ply Tubeless and 2 master cylinders	DOT4	SRV04	2065 €



TUBELESS WHEELS

Main wheel mountring schema with BERINGER wheel



Wheel & brake SET for Lancair 320/360/Legacy & Glasair III p.14

Upgrade your experimental aircraft and save 6 to 10 Lbs with high performances **BERINGER®** wheels and brakes. These complete wheels and brake sets are designed to mount directly, replacing original equipment. Wheels are aluminum red anodized, fully CNC machined, with O-rings for Tubeless mounting. Brake calipers use sintered metallic pads and stainless steel pistons for increased life time.

The wheel & brake set includes:

- 2 wheels 5" with brake and stainless steel discs
- 2 tires (mounted on rims and pressure tested)
- 2 axles
- 4 master cylinders & 2 fluid reservoirs
- 1 parking brake valve
- 1 anti-lock regulator
- stainless steel brake lines
- detailed mounting procedure.



Aircraft Type	DESCRIPTION	Brake fluid	BERINGER® Part Nr.	Price without tax
Lancair 320/360 (retractable LG)	Complete package as described above, with 4.00-5 wheels and Tires 11x4.00-5", 8ply	DOT4	SLC02	2092 €
Lancair 320/360 (retractable LG)	Same as SLC02 with only 2 Master cylinders and no parking brake valve	DOT4	SLC04	1691 €
Lancair legacy (retractable LG)	Complete package as described above, with Michelin Aviator Tires 5,00-5", 10ply Tubeless	DOT4	SLC01	2430 €
Lancair legacy (retractable LG)	Same as SLC01 with only 2 Master cylinders and no parking brake valve	DOT4	SLC03	1986 €
Glasair III (retractable LG)	Complete package as described above, with Michelin Aviator Tires 5,00-5", 10ply Tubeless	DOT4	SGL01	2384 €
Glasair III (retractable LG)	Same as SGL01 with only 2 Master cylinders and no parking brake valve	DOT4	SGL02	1986 €

TUBELESS WHEELS

BERINGER Wheels and brakes mounted on Race GLASAIR III landing gear



Wheel & brake SET for ULM & Home Built Aircraft

Upgrade your experimental aircraft and save 6 to 10 Lbs with high performances BERINGER® wheels and brakes. These complete wheels and brake sets are designed to mount directly, replacing original equipment. Wheels are aluminum red anodized, fully CNC machined, with O-rings for Tubeless mounting. Brake calipers use sintered metallic pads and stainless steel pistons for increased life time.

The wheel & brake set includes:

- 2 wheels with caliper and stainless steel discs
- 2 Tires
- 2 axles
- master cylinders with reservoir
- 1 anti-lock regulator or ultra light pressure limiter
- stainless steel brake lines
- detailed mounting procedure.



Aircraft Type	DESCRIPTION	Brake fluid	BERINGER® Part#	Price without tax
Zenair CH601XL	2 wheels & brake set 4.00-6" light + tires 15x6,00-6" 6ply, 2 pedal master cylinders	DOT4	SZH05	1653 €
Jabiru J400/J430	2 wheels & brake set + 2 pedal master cylinders	DOT4	SJU01	1965 €
Jabiru J400/J430	2 wheels & brake set + 1 hand master cylinder + 1 ultra light pressure limiter 25 bars	DOT4	SJU05	1807 €
Jabiru J170	2 wheels & brake set + 2 pedal master cylinders	DOT4	SJU02	1739 €
Jabiru J170	2 wheels & brake set + 1 hand master cylinder + 1 ultra light pressure limiter 25 bars	DOT4	SJU04	1581 €
MCR01	2 wheels & brake set with tires 11x4.00-5" 8 ply + 2 pedal master cylinders	DOT4	SDY01	1667 €
Gaz'Aile	2 wheels & brake set with tires 11x4.00-5" 8 ply + 1 hand master cylinder + 1 ultra light pressure limiter 25 bars	DOT4	SGZ01	1320 €
Sting Carbon	2 wheels & brake set with tires 11x4.00-5" 8 ply + 1 hand master cylinder + 1 ultra light pressure limiter 25 bars	DOT4	SSC01	1561 €



Stainless steel DISC

- In stainless. Steel with specific heat treatment and grinding
- Floating mount in order to absorb dilatations and deformations when heated
- For 5" and 6" light wheel: 6" **part # ZJA01** for 6" wheel : 7" **part# ZJA02**



PADS

- Friction material: sintered metal
- High coefficient of friction
- Very long life time
- Withstand very high temperatures : 1100°F

PATENTED



REPAIR KITS

Repair kits are available for BERINGER® parts:

- Hand master cylinder **part# KAA01**
- Rudder pedal master cylinder **part# KAB01**
- 2 piston caliper **part# KBA01**
- 3 piston caliper **part# KBA02**



SPARE CLIPS

Stainless steel clips between wheel rim and disc.
Includes: 10 left and 10 right (set for 1 wheel), procedure



FLUID RESERVOIR

Lightweight translucent plastic reservoir with aluminum anodized cover and brake fluid level indication. No leakage of fluid with flexible diaphragm. Use only DOT4 brake fluid in this reservoir.

Working capacity: 0.3 cu in, total capacity: 0.67 cu in. steel clamp



DOT4 brake fluid

High performance DOT4 brake fluid with dry boiling point at 440°F minimum meets FMVSS 116/DOT4 specifications.

DOT4 is yellow colored and it is not compatible with brake system designed for mineral base fluids.



Part#	DESCRIPTION	Price without tax
DSC-001	Stainless steel brake disc for Aerotec caliper 3P EA-02	85 €
DSC-005	Stainless steel brake disc for reinforced Aerotec caliper 2P EA-03	48 €
DSC-006	Stainless steel brake disc for Aerotec caliper 2P EA-01	41 €
ZEA01	OEM pads for BERINGER® 2 piston caliper EA-01 and EA-03 (incl. 2 pads for 1 caliper, screws & procedure)	33 €
ZEB01	OEM pads for BERINGER® 3 piston caliper EA-02 (incl. 2 pads for 1 caliper, screws & procedure)	58 €
KCA01	Spare CLIPS for one 5" wheel (10 left and 10 right)	20 €
KCA02	Spare CLIPS for one 6" Light wheel (10 pieces)	20 €
HFA01	Reservoir kit for BERINGER® master cylinders (Incl. 1 reservoir, EPDM hose 10cm, stainless steel clamp)	31 €
KAA01	Repair kit for BERINGER® hand master cylinder HAA0, HAA02: piston seals, specific grease, ball bearings, copper seals, instructions	48 €
KAB01	Repair kit for rudder pedal master cylinder HBA01: all piston seals, specific grease, ball bearings, copper seals, instructions	72 €
KBA01	Repair kit for 2 piston caliper EA-01 and EA-03: piston seals, pistons, specific grease, copper washer	48 €
KBA02	Repair kit for 3 piston caliper EA-02: piston seals, pistons, specific grease, copper washer	62 €
KDF01	O-rings to be replaced at each tyre changing for 5" wheel (set for one wheel)	8 €
KDF02	O-rings to be replaced at each tyre changing for 6" and 6" light wheel (set for one wheel)	8 €
ZPA01	Stainless steel safety lock wire (roll of 450g)	32 €
HJA01	High performance Brake fluid DOT4	0.5L 18.40 €
HJA02	High performance Brake fluid DOT5 Silicone base (longer life time) DOT5 cannot be mixed with DOT4.	0.35L 22.50 €



WHEELS & BRAKES

High performances for aircraft

BERINGER SA
Au Bourg
F-42940 CHATELNEUF
France

Tel: 0033-477-768-295 Fax: 0033-477-768-009
Email: contact@beringer.fr Website: www.beringer.fr

19-03-2009

BRAKE LINE

ORDER FORM

Date:.....Your Customer#:.....P.O.:.....

Type of aircraft:.....

Bill to Name:.....**Ship to** Name:.....
Address:.....Address:.....
City/Zip Code:.....City/Zip Code:.....
Country:.....Country:.....

HOME PHONE: (.....)-.....WORK PHONE: (.....)-.....

METHOD OF PAYMENT

e-mail: Fax:

☐ Visa ☐ MasterCard Card number

Expiry date (MM/DD/YYYY):.....Cardholder's name:.....

3 Numbers on the back Cardholder's signature

Straight fitting, female concave seat (stainless)		
* HEA08	7/16x20	35 €
* HEA09	3/8x24	29 €

HDB01 Stainless steel hose, teflon inner tube

L=..... m 10 € / m

Brake line #1	Price
1 st fitting €
2 nd fitting €
Hose €
Mounting and testing	10 €
Total 1 €

Straight fitting, female concave seat (stainless)		
* HEA08	7/16x20	35 €
* HEA09	3/8x24	29 €

HDB01 Stainless steel hose, teflon inner tube

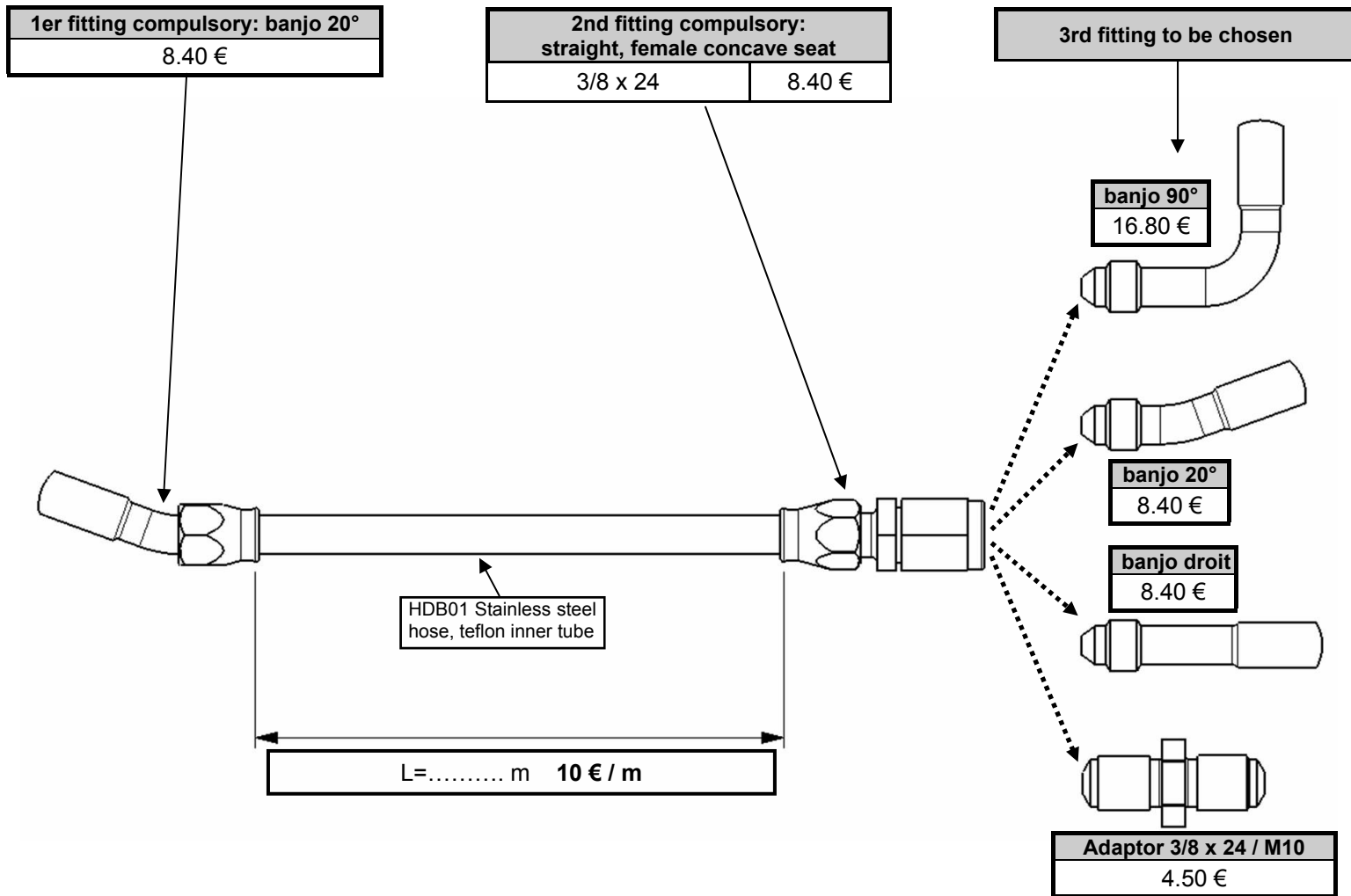
L=..... m 10 € / m

Brake line #2	Price
1 st fitting €
2 nd fitting €
Hose €
Mounting and testing	10 €
Total 2 €

BERINGER Brake hose is stainless steel braided with PTFE inner tube and stainless fittings. It provides consistent brake pedal pressure without spongy feeling. The flexibility allows landing gear leg movements and avoids leakage that appears with hardline tube. Ends are straight fittings, female concave seat: 7/16x20 or 3/8x24 (stainless steel).
- Max pressure allowed: 3000 PSI
- Each brake line is pressure tested and delivered with certificate.

Brake line n°	Retail unit price without tax	Qty	amount
3 €		
4 €		
5 €		
Total without tax			
Estimated transport cost			
taxes			
Total enclosed			

* Delete as appropriate



Brake line n° 3		Price retail
1st fitting compulsory		8.40 €
hosem €
2nd fitting compulsory		8.40 €
3rd fitting to be chosen €
Assembling and test		10.00 €
Total 3	 €

Brake line n° 4		Price retail
1st fitting compulsory		8.40 €
hosem €
2nd fitting compulsory		8.40 €
3rd fitting to be chosen €
Assembling and test		10.00 €
Total 4	 €

Brake line n° 5		Price retail
1st fitting compulsory		8.40 €
hosem €
2nd fitting compulsory		8.40 €
3rd fitting to be chosen €
Assembling and test		10.00 €
Total 5	 €

BERINGER Brake hose is stainless steel braided with PTFE inner tube and stainless fittings. It provides consistent brake pedal pressure without spongy feeling. The flexibility allows landing gear leg movements and avoids leakage that appears with hardline tube. Ends are straight fittings, female concave seat: 7/16x20 or 3/8x24 (stainless steel).

- Max pressure allowed: 3000 PSI
- Each brake line is pressure tested and delivered with certificate.

Brake line n°	Retail unit price without tax	Qty	amount
3 €		
4 €		
5 €		
Total without tax			
Estimated transport cost			
taxes			
Total enclosed			



01/07/2008

Tel: 0033-477-768-295 **Fax:** 0033-477-768-009
Email: contact@beringer.fr
Website: www.beringer.fr

CUSTOMER ORDER FORM

Bill to Name: Address: City/Zip Code: Country:	Ship to	Name: Address: City/Zip Code: Country:
---	----------------	---

HOME PHONE: (.....).....-..... **WORK PHONE:** (.....).....-.....

e-mail: Fax:

☐ MasterCard

Card number:

Cardholder's name:.....

Cardholder's signature:.....

Expiration date (MM/DD/YYYY):.....

3 Numbers:.....